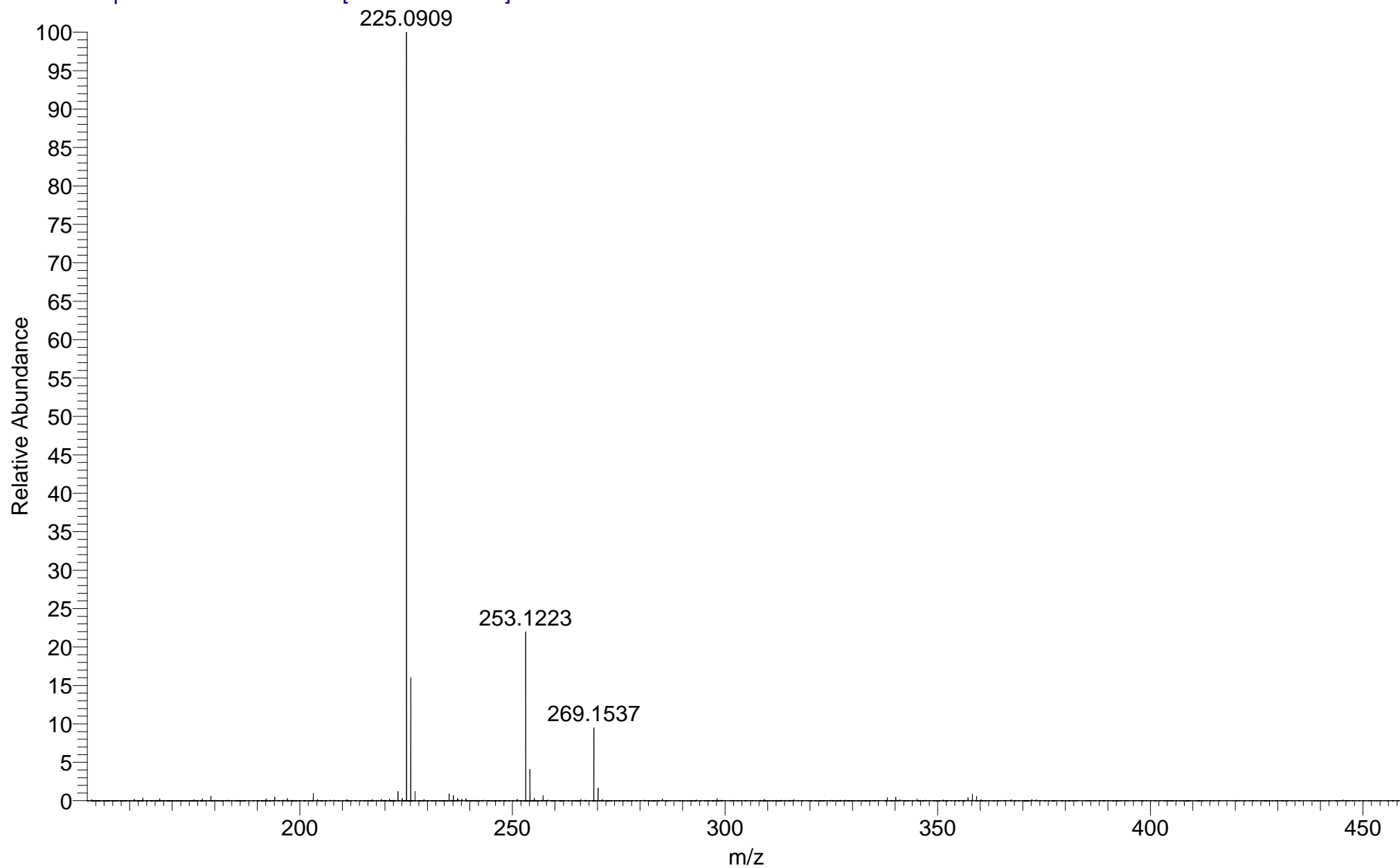
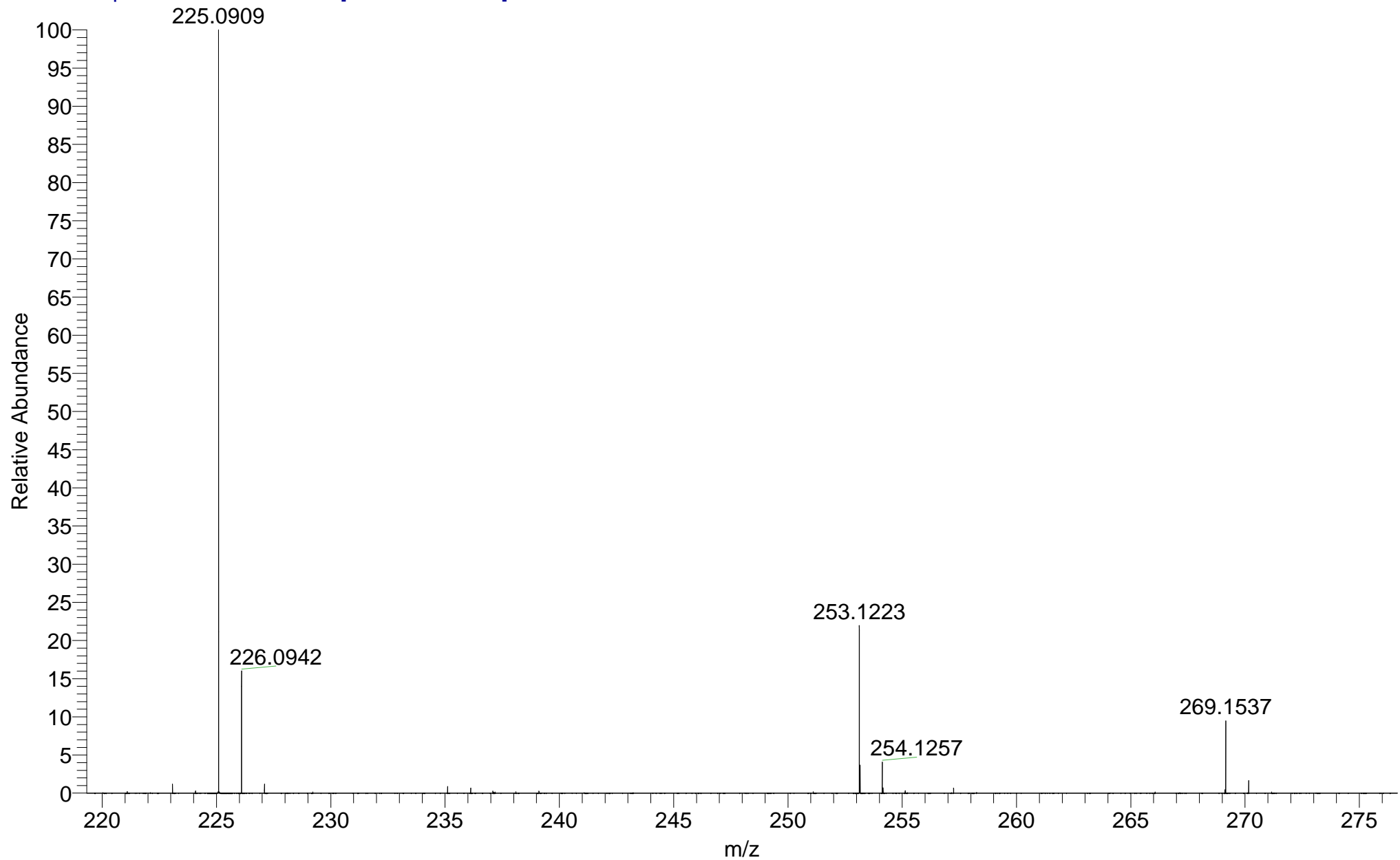


STASMI-RT73M-PJ-A #16-20 RT: 0.85-1.07 AV: 5 NL: 2.16E8

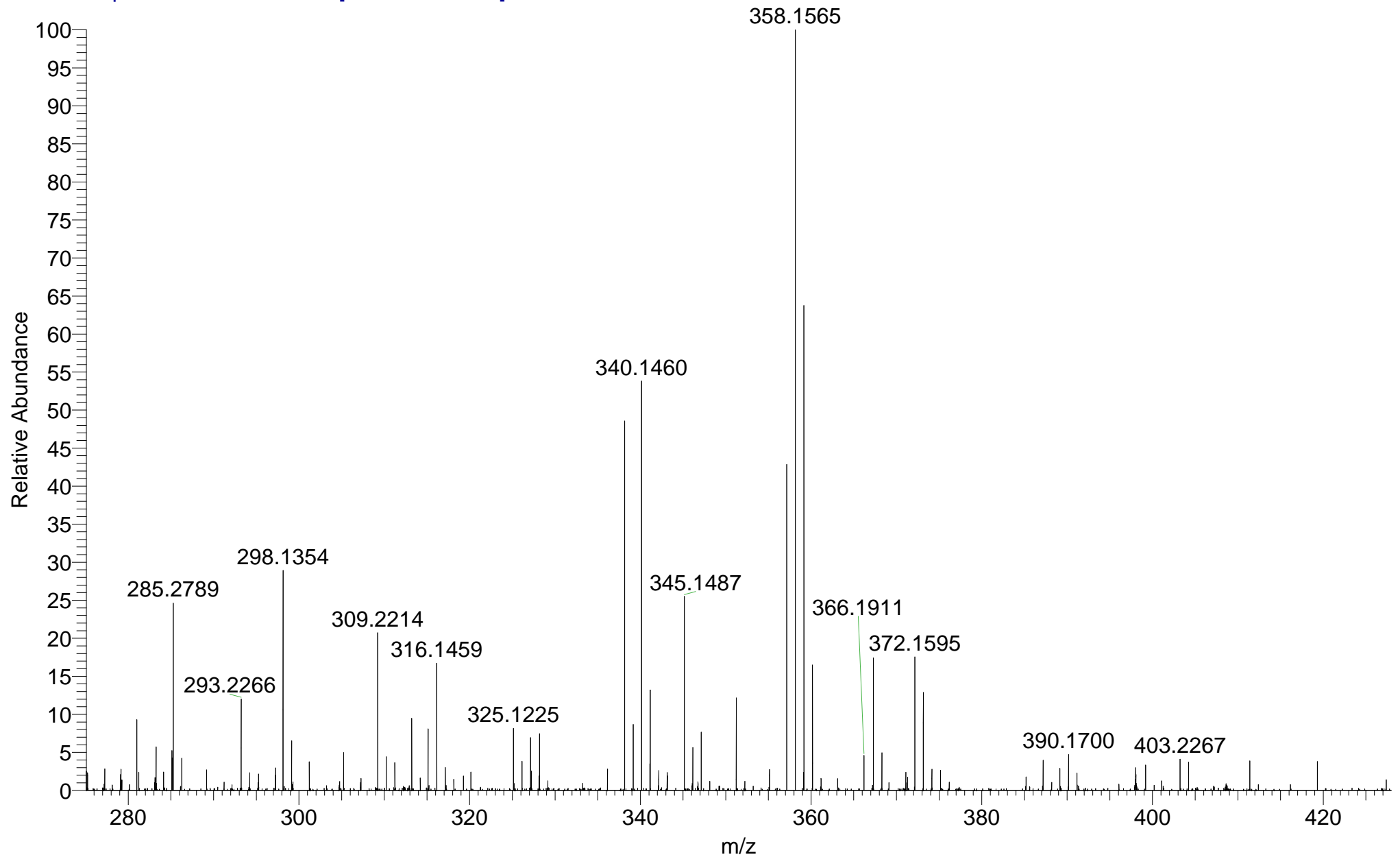
T: FTMS + p APCI corona Full ms [150.00-1200.00]

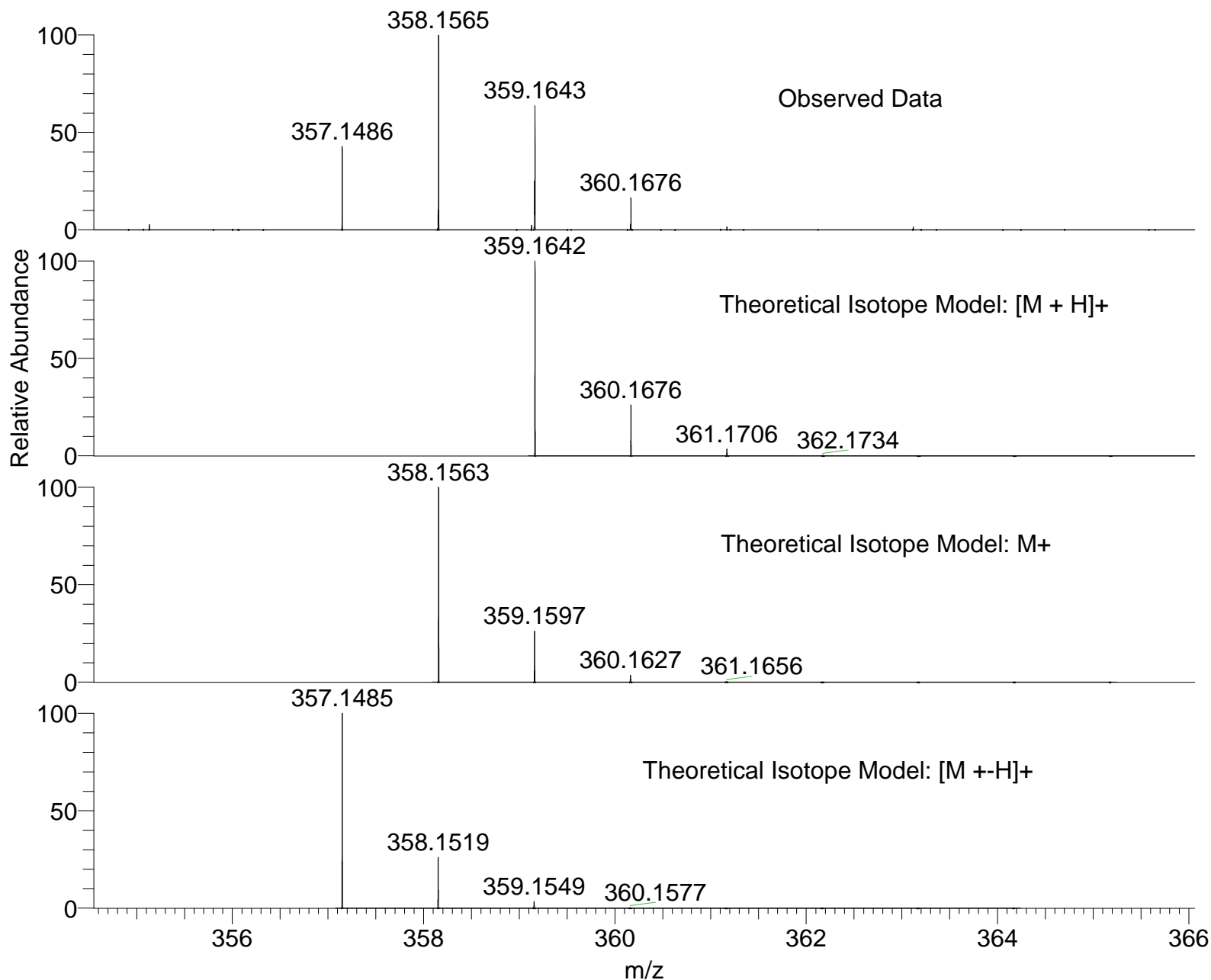


STASMI-RT73M-PJ-A #16-20 RT: 0.85-1.07 AV: 5 NL: 2.16E8
T: FTMS + p APCI corona Full ms [150.00-1200.00]



STASMI-RT73M-PJ-A #16-20 RT: 0.85-1.07 AV: 5 NL: 1.91E6
T: FTMS + p APCI corona Full ms [150.00-1200.00]





NL:
1.91E6
STASMI-RT73M-PJ-A#16-20
RT: 0.85-1.07 AV: 5 T: FTMS
+ p APCI corona Full ms
[150.00-1200.00]

NL:
1.79E4
C₂₄ H₂₂ O₃ H:
C₂₄ H₂₃ O₃
p (gss, s /p:40) Chrg 1
R: 100000 Res .Pwr . @FWHM

NL:
1.79E4
C₂₄ H₂₂ O₃:
C₂₄ H₂₂ O₃
p (gss, s /p:40) Chrg 1
R: 100000 Res .Pwr . @FWHM

NL:
1.80E4
C₂₄ H₂₁ O₃:
C₂₄ H₂₁ O₃
p (gss, s /p:40) Chrg 1
R: 100000 Res .Pwr . @FWHM

Isotope: Min. .. Max.
 14 N 0....15
 16 O 0....15
 12 C 0....70
 1 H 0....80
 23 Na 0....0
 Tolerance Window: +- 5.00 ppm
 Db/Ring Equiv: -3.. 100
 Fits: 50

N-Rule: Do not use
 Charge: 1

Mass	Theoretical Mass	Delta [ppm]	RDB	Composition
357.1486	357.1485	0.2	14.5	C ₂₄ H ₂₁ O ₃
	357.1490	-1.2	7.5	C ₉ H ₁₇ O ₄ N ₁₂
	357.1490	-1.2	2.0	C ₁₀ H ₂₃ O ₉ N ₅
	357.1477	2.5	-3.0	C ₉ H ₂₇ O ₁₃ N ₁
	357.1477	2.6	2.5	C ₈ H ₂₁ O ₈ N ₈
	357.1477	2.6	8.0	C ₇ H ₁₅ O ₃ N ₁₅
	357.1472	4.0	15.0	C ₂₂ H ₁₉ O ₂ N ₃
	357.1504	-4.9	7.0	C ₁₁ H ₁₉ O ₅ N ₉
	357.1504	-5.0	1.5	C ₁₂ H ₂₅ O ₁₀ N ₂